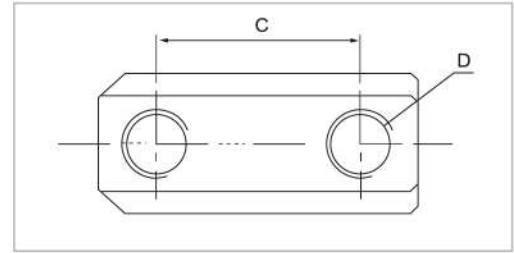
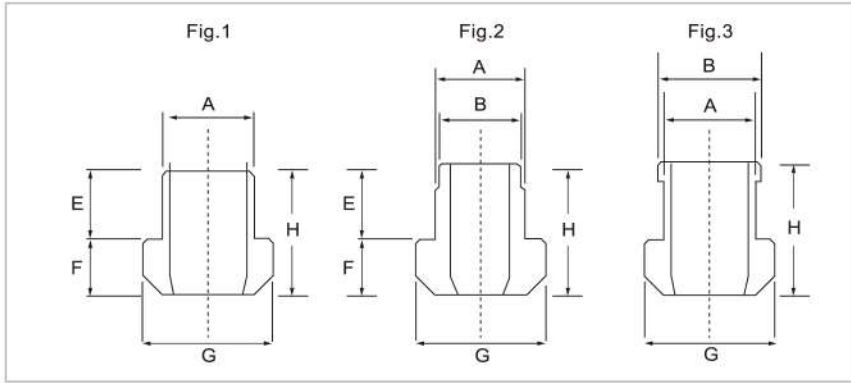
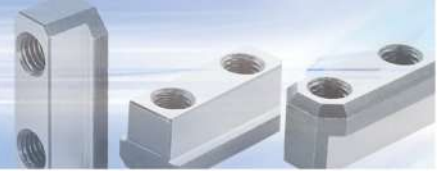


# JAW T-NUTS



- To suit power chucks.
- We also have varied sizes of t-nuts.
- Jaw Nuts could be designed according to the brand of power chucks.

## FEATURE

- To connect power chuck and soft jaws, to suit different brands.
- We categorize the T-Nuts into
  - Standard type (fig.1) 6"Soft Jaws are used for 8"chuck, 8"Soft Jaws are used for 10"chuck
  - Special type (fig.2) 10"Soft Jaws are used for 12"chuck, 12"Soft Jaws are used for 15"chuck
  - Special type (fig.3) 10"Soft Jaws are used for 8"chuck,

## DIMENSIONS

UNIT: mm

Fig.1



### Standard T-Nuts To suit Kitagawa B-type

| DIMENSION ORDER NUMBER | Chuck Size | A  | C  | D   | E  | F    | G    | H    | To suit Kitagawa | Reference Drawing |
|------------------------|------------|----|----|-----|----|------|------|------|------------------|-------------------|
| <b>TB06</b>            | 6"         | 12 | 20 | M10 | 15 | 7.5  | 17.5 | 22.5 | B-06             | Fig. 1            |
| <b>TB08</b>            | 8"         | 14 | 25 | M12 | 16 | 9.5  | 20.5 | 25.5 | B-08             | Fig. 1            |
| <b>TB10</b>            | 10"        | 16 | 30 | M12 | 16 | 9.5  | 22.5 | 25.5 | B-10             | Fig. 1            |
| <b>TB12</b>            | 12"        | 18 | 30 | M14 | 20 | 13.5 | 26.5 | 33.5 | B-12             | Fig. 1            |

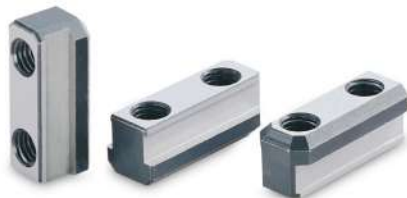
Fig.2



### Standard T-Nuts To suit Kitagawa B-200 type

| DIMENSION ORDER NUMBER | Chuck Size | A  | B  | C  | D   | E     | F    | G    | H    | To suit Kitagawa | Reference Drawing |
|------------------------|------------|----|----|----|-----|-------|------|------|------|------------------|-------------------|
| <b>T05</b>             | 5"         | 10 | -- | 14 | M8  | 9.5   | 5.5  | 14.5 | 15   | B-205            | Fig. 1            |
| <b>T06</b>             | 6"         | 12 | -- | 20 | M10 | 11    | 7.5  | 17.5 | 18.5 | B-206            | Fig. 1            |
| <b>T08</b>             | 8"         | 14 | -- | 25 | M12 | 12    | 8.5  | 20.5 | 20.5 | B-208            | Fig. 1            |
| <b>T10</b>             | 10"        | 16 | -- | 30 | M12 | 13    | 8.5  | 22.5 | 21.5 | B-210            | Fig. 1            |
| <b>T12</b>             | 12"        | 21 | -- | 30 | M16 | 16.25 | 11.5 | 29.5 | 27.8 | B-212            | Fig. 1            |
| <b>T15</b>             | 15"        | 24 | 22 | 43 | M20 | 29    | 16.5 | 33.5 | 45.5 | B-15             | Fig. 2            |

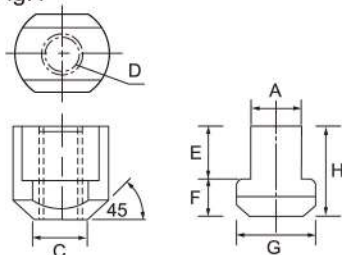
Fig.3



### Special T-Nuts To suit Kitagawa B-200 type Such as: 6" soft jaw suitable for 8" chuck(6" to 8")

| DIMENSION ORDER NUMBER | Chuck Size | Suitable to | A  | B  | C  | D   | H    | Reference Drawing |
|------------------------|------------|-------------|----|----|----|-----|------|-------------------|
| <b>TS08-06</b>         | 6"         | 8" to 6"    | 12 | 14 | 25 | M10 | 18.5 | Fig. 3            |
| <b>TS06-08</b>         | 8"         | 6" to 8"    | 14 | 12 | 20 | M10 | 20.5 | Fig. 2            |
| <b>TS10-08</b>         | 8"         | 10" to 8"   | 14 | 16 | 30 | M12 | 20.5 | Fig. 3            |
| <b>TS08-10</b>         | 10"        | 8" to 10"   | 16 | 14 | 25 | M12 | 21.5 | Fig. 2            |
| <b>TS10-12</b>         | 12"        | 10" to 12"  | 21 | 16 | 30 | M12 | 28   | Fig. 2            |
| <b>TS12-15</b>         | 15"        | 12" to 15"  | 24 | 21 | 30 | M16 | 45.5 | Fig. 2            |

Fig.4



### Standard T-Nuts

| DIMENSION ORDER NUMBER | Chuck Size | A    | C  | D   | E     | F  | G    | H     | To suit kitagawa | Reference Drawing |
|------------------------|------------|------|----|-----|-------|----|------|-------|------------------|-------------------|
| <b>TB15</b>            | 15"        | 25.5 | 26 | M20 | 20.25 | 19 | 35   | 39.25 | N-15             | Fig.4             |
| <b>T21</b>             | 21"        | 25   | 27 | M20 | 26    | 19 | 37.5 | 45    | B-21             | Fig.4             |

- Material: SCM440